

## THE RIGHT SIZES TO SIMPLIFY YOUR PROCEDURE AND IMPROVE RESULTS\*

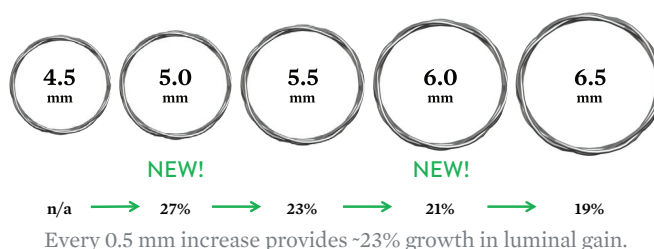
### IMPROVE 1:1 STENT TO VESSEL SIZING

New 5.0 mm and 6.0 mm diameters provide more options to improve 1:1 stent to vessel sizing, from small vessels in popliteal to larger, tapered vessels in SFA



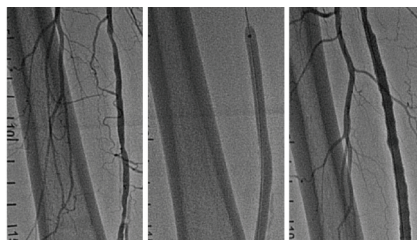
### OPTIMIZE LUMINAL GAIN

Upsize or downsize as needed in 0.5 mm increments to optimize luminal gain across vessel sizes



### SIMPLIFY DECISIONS AROUND VESSEL PREP

New stent diameters simplify BDC selection and pre-dilatation decisions around vessel prep



## RESULTS MATTER

SUPERB Trial<sup>1</sup>



**91%**  
PATENCY (K-M) AT 1 YEAR  
When nominally deployed<sup>\*\*</sup>



**94%**  
FREEDOM FROM TLR AT 3 YEARS  
When nominally deployed<sup>\*\*</sup>

## PLATFORM MATTERS



HIGH COMPRESSION RESISTANCE<sup>2</sup>



LOW CHRONIC OUTWARD FORCE<sup>2</sup>



HIGH FLEXIBILITY<sup>3</sup> AND FRACTURE RESISTANCE<sup>1</sup>

\* Proper sizing, preparation, and deployment technique result in excellent patency rates<sup>1</sup>

\*\* Nominal deployment is defined as the stent length upon deployment being within +/- 10% of the labeled stent length. This data is from a non-powered post-hoc analysis.

**Information contained herein for DISTRIBUTION outside of the U.S. only. Check the regulatory status of the device in areas where CE marking is not the regulation in force.**

# Supera™ Stent Preparation and Sizing Chart

CATHETER OUTER SHEATH DIAMETER	LABELED STENT DIAMETER (OUTER DIAMETER)	REFERENCE VESSEL DIAMETER	NOMINAL STENT LENGTH (MM)
6F 2.06 mm 0.081 inches	4.5 mm	4.0 mm – 4.5 mm	20, 30, 40, 60, 80, 100, 120, 150
	5.0 mm*	4.5 mm – 5.0 mm	20, 30, 40, 60, 80, 100, 120
	5.5 mm	5.0 mm – 5.5 mm	20, 30, 40, 60, 80, 100, 120, 150, 180, 200
	6.0 mm*	5.5 mm – 6.0 mm	20, 30, 40, 60, 80, 100, 120
	6.5 mm	6.0 mm – 6.5 mm	20, 30, 40, 60, 80, 100, 120, 150, 180, 200
	7.5 mm	7.0 mm – 7.5 mm	20, 30, 40, 60, 80, 100

## Size Matrix and Part Numbers

CE	STENT OUTER DIAMETER (mm)	STENT LENGTH (mm)									
		20	30	40	60	80	100	120	150	180	200
80 cm 6F	4.5	N/A	N/A	42045040-080	42045060-080	42045080-080	42045100-080	42045120-080	42045150-080	N/A	N/A
	5.0*	N/A	N/A	42050040-080	42050060-080	42050080-080	42050100-080	42050120-080	N/A	N/A	N/A
	5.5	N/A	N/A	42055040-080	42055060-080	42055080-080	42055100-080	42055120-080	42055150-080	42055180-080	42055200-080
	6.0*	N/A	N/A	42060040-080	42060060-080	42060080-080	42060100-080	42060120-080	42060150-080	N/A	N/A
	6.5	N/A	N/A	42065040-080	42065060-080	42065080-080	42065100-080	42065120-080	42065150-080	42065180-080	42065200-080
	7.5	N/A	N/A	42075040-080	42075060-080	42075080-080	42075100-080	N/A	N/A	N/A	N/A
120 cm 6F	4.5	42045020-120	42045030-120	42045040-120	42045060-120	42045080-120	42045100-120	42045120-120	42045150-120	N/A	N/A
	5.0*	42050020-120	42050030-120	42050040-120	42050060-120	42050080-120	42050100-120	42050120-120	N/A	N/A	N/A
	5.5	42055020-120	42055030-120	42055040-120	42055060-120	42055080-120	42055100-120	42055120-120	42055150-120	42055180-120	42055200-120
	6.0*	42060020-120	42060030-120	42060040-120	42060060-120	42060080-120	42060100-120	42060120-120	42060150-120	N/A	N/A
	6.5	42065020-120	42065030-120	42065040-120	42065060-120	42065080-120	42065100-120	42065120-120	42065150-120	42065180-120	42065200-120
	7.5	42075020-120	42075030-120	42075040-120	42075060-120	42075080-120	42075100-120	N/A	N/A	N/A	N/A

\*5.0 mm and 6.0 mm diameters available in select countries only. Check with your local Abbott representative for local availability. Data on file at Abbott.

- Garcia L. et al., Catheterization and Cardiovascular Interventions 2017 Jun 1;89(7):1259-1267.
- Competitors tested include Astron Pulsar-18, Complete SE, EverFlex, Innova, LifeStent, Misago, S.M.A.R.T., and Zilver PTX. Test(s) performed by and data on file at Abbott.
- Flexibility is defined as kink resistance. Competitors tested include Astron Pulsar-18, Complete SE, Everflex, Innova, LifeStent, Misago, S.M.A.R.T., and Zilver PTX. Test(s) performed by and data on file at Abbott.

**CAUTION:** This product is intended for use by or under the direction of a physician. Prior to use, reference the Instructions for Use, inside the product carton (when available) or at [eifu.abbottvascular.com](http://eifu.abbottvascular.com) or at [medical.abbott/manuals](http://medical.abbott/manuals) for more detailed information on Indications, Contraindications, Warnings, Precautions and Adverse Events.

**Information contained herein for DISTRIBUTION outside of the U.S. only. Check the regulatory status of the device in areas where CE marking is not the regulation in force.**

Illustrations are artist's representations only and should not be considered as engineering drawings or photographs. Photos on file at Abbott.

### Abbott International BVBA

Park Lane, Culliganlaan 2B, 1831 Diegem, Belgium, Tel: 32.2.714.14.11

™ Indicates a trademark of the Abbott Group of Companies.

[www.cardiovascular.abbott](http://www.cardiovascular.abbott)

©2020 Abbott. All rights reserved. MAT-2002787 v1.0

